



GOLD PAINT

Nippon Gold Paint
Precious for all Imaginations



GOLD PAINT

Nippon Gold Paint, Precious for all Imaginations

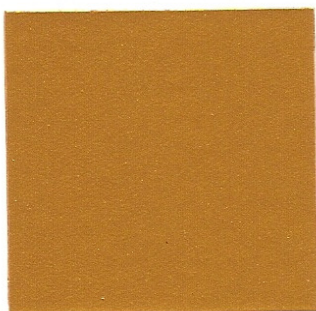
Today, as in ancient times, the precious Gold is always human desire to reflect wealth, prestige and elegance. Because of its appreciation and valuable, Nippon Paint proudly creates Nippon Gold Paint, paint of lustrous and prestigious gold.

Nippon Gold Paint provides every shade of colours to serve every need. Perfect for both interior and exterior use. Suitable for decorating and covering all kind of surfaces such as images of Buddha, Buddhist temple, pavillion, gable apex, spirit house, set of alter table and furniture.

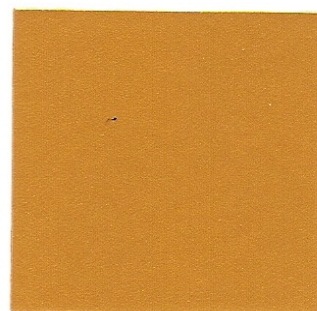
TOP COAT



Real Gold
1100, # 2100, # 3100



Empire Gold
1200, # 2200, # 3200



Dragon Gold
1300, # 2300, # 3300

UNDER COAT



Yellow # 1005



Yellow # 2005



Yellow # 3005

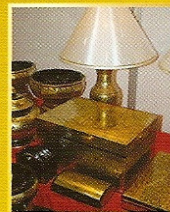
* Nippon Gold Paint shines on all settings and props in the historical film of King Naresuan the Great.

* San Lak Muang, Petchaboon Province



* Wat Sukkasem, Angtong Province.

* Every surface that needs exquisite and elegant look



Nippon Gold Paint 1000 (Acrylic Lacquer)

An Acrylic Nitrocellulose paint contains high quality gold pigment, easy apply and fast drying, high weather resistance, rich gold and dazzling shine. It is suitable for iron, galvanized iron, aluminum, stainless steel, alloy and ceramics.



Nippon Gold Paint 2000 (Acrylic Enamel)

An Acrylic oil paint made from Thermoplastic Acrylic Resin with ingredient of high quality gold pigment to deliver excellent shine. Easy apply and fast drying, high weather resistance, rich gold and dazzling shine. Best for iron, galvanized iron, aluminum, alloy, ceramic, cement, wood, tiles and gypsum.



Nippon Gold Paint 3000 (Acrylic Emulsion)

100% Acrylic Paint with ingredient of high quality gold pigment. High weather resistance, rich gold and excellent luster. It is ideal for cement, wood, tiles and gypsum surfaces.



DIRECTIONS FOR USE

Type	Painting process	Use for	Product	No. of Coating	Standard Packing	Coverage Area (m ²)	Application Method	Dilution	Interval Time
NIPPON GOLD PAINT 1000 # 1100 Real Gold # 1200 Empire Gold # 1300 Dragon Gold	Primer	Interior and Exterior	Nippon Gold Paint 1000 Under Coat	2 - 3	1 Gallon	24 - 26	Spray	Nippon Gold Paint 1000 Thinner 70 - 100 % for Spray	Drying Sanding > 1 hours Drying to Recoat > 1 hours
	Top Coat	Interior and Exterior	Nippon Gold Paint 1000	2 - 3	1 Gallon	11 - 13	Spray	Nippon Gold Paint 1000 Thinner 70 - 120 % for Spray	Drying to Recoat ~ 5 - 10 hours
	Clear	Interior and Exterior	Nippon Gold Paint 1000 Clear	2	1 Gallon	14 - 16	Spray	—	Drying to Recoat > 1 Day
NIPPON GOLD PAINT 2000 # 2100 Real Gold # 2200 Empire Gold # 2300 Dragon Gold	Primer	Interior and Exterior	Nippon Gold Paint 2000 Under Coat	1	1 Gallon	27 - 30 13 - 15	Brush, Roller, Spray	Nippon Gold Paint 1000 Thinner 5 % for Brush, 100 % for Spray	More than 9 hours
	Top Coat	Interior and Exterior	Nippon Gold Paint 2000	2	1 Gallon	13 - 15 6.5 - 7.5	Brush, Roller, Spray	Nippon Gold Paint 1000 Thinner 5 % for Brush, 100 % for Spray	More than 9 hours
NIPPON GOLD PAINT 3000 # 3100 Real Gold # 3200 Empire Gold # 3300 Dragon Gold	Primer	Interior and Exterior	Nippon Extra - V Wall Sealer	1	1 Gallon 5 Gallons	35 - 40 175 - 200	Brush, Roller, Spray	Clean Water 5 - 10 %	More than 4 hours
	Under Coat	Interior and Exterior	Nippon Gold Paint 3000 Under Coat	1	1/4 Gallon 1 Gallon	7.5 - 9 30 - 35	Brush, Roller, Spray	Clean Water 15 - 10 %	More than 4 hours
	Top Coat	Interior and Exterior	Nippon Gold Paint 3000	2	1/4 Gallon 1 Gallon	3.7 - 4.5 15 - 17	Brush, Roller, Spray	Clean Water 0 - 15 %	More than 2 hours



Nippon Gold Paint, Precious for all Imaginations



NIPPON PAINT (THAILAND) CO., LTD.

101 Moo 3, Soi Suksawad Rd., T. Bangchak, A. Prapradang, Samutprakarn 10130
Tel. +66-2463-0032, +66-2463-0116 Fax : +66-2463-2214 www.nipponpaint.co.th